

## Reconstitution

Nutrafinish<sup>®</sup>, food supplement coating is quick and easy to prepare. Simply add the Nutrafinish powder to water and mix for 45 minutes with a propeller stirrer.\*

The coating suspension can be made with up to 20% solids. Your Area Technical Manager can recommend the ideal solids for your specific Nutrafinish system and your equipment.

### MATERIALS

- Nutrafinish food supplement coating
- Water, deionized or distilled preferred, ambient temperature (maximum 30 °C)

### EQUIPMENT

- Variable-speed mixer capable of producing and maintaining a vortex.
- Propeller stirrer. For optimum mixing, utilize a propeller with a diameter equivalent to  $1/3 - 1/2$  of the diameter of the mixing vessel. (Figure 1)
- Mixing vessel large enough to contain a liquid volume 15% to 25% greater than the total suspension being prepared. The liquid height should be equal to, or greater than, the vessel diameter.

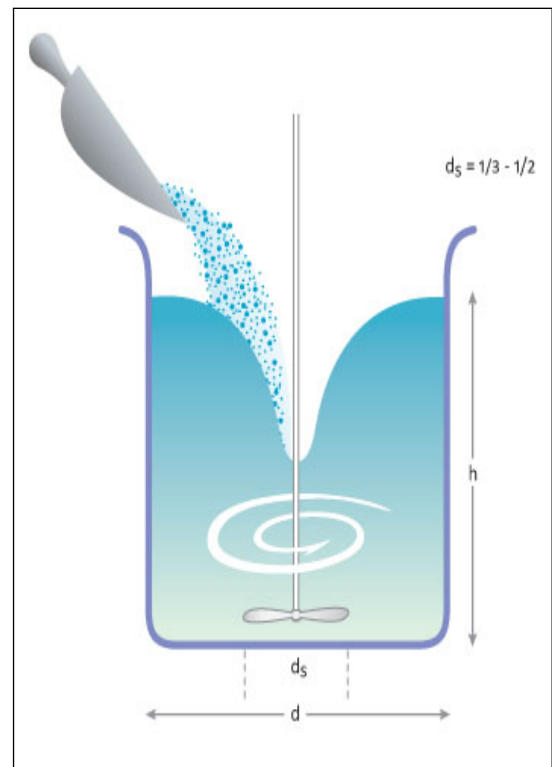
### \*MIXING PROCEDURE

1. Weigh necessary quantity of Nutrafinish powder.
2. Weigh necessary quantity of water into the mixing vessel.
3. With the propeller in the center and as close to the bottom of the vessel as possible, stir the water to form a vortex without drawing air into the liquid.
4. Steadily add the Nutrafinish powder to the vortex, avoiding powder flotation on the liquid surface. If required, increase the stirrer speed in order to maintain the vortex.
5. After all the Nutrafinish powder has been added, reduce the mixer speed to nearly eliminate the vortex. Mix for 45 minutes.

### SUSPENSION HANDLING

The prepared Nutrafinish dispersion can be pumped directly from the preparation vessel if desired. We recommend that the Nutrafinish dispersion be gently agitated during the coating process.

Figure 1



<b>Recommended Reconstitution Levels for Pigmented Coatings</b>	
<b>145 Series</b>	<b>12 – 15% w/w</b>
<b>147 Series</b>	<b>10 – 12% w/w</b>
<b>148 Series</b>	<b>12 – 18% w/w</b>
<b>149 Series</b>	<b>20% w/w</b>
<b>Lower solid concentrations are required for clear coatings.</b>	
<b>A weight gain of 2.48 – 3.71 mg/cm<sup>2</sup> (2-3%) is recommended.</b>	

The information contained herein, to the best of Colorcon, Inc.'s knowledge is true and accurate. Any recommendations or suggestions of Colorcon, Inc. with regard to the products provided by Colorcon, Inc. are made without warranty, either implied or expressed, because of the variations in methods, conditions and equipment which may be used in commercially processing the products, and no such warranties are made for the suitability of the products for any applications that you may have disclosed. Colorcon, Inc. shall not be liable for loss of profit or for incidental, special or consequential loss or damages.

Colorcon, Inc. makes no warranty, either expressed or implied, that the use of the products provided by Colorcon, Inc., will not infringe any trademark, trade name, copyright, patent or other rights held by any third person or entity when used in the customer's application.

For more information, contact your Colorcon representative or call:

North America  
+1-215-699-7733

Europe/Middle East/Africa  
+44 (0)-1322-293000

Latin America  
+54-11-5556-7700

India  
+91-832-6727373

China  
+86-21-61982300

You can also visit our website at [www.colorcon.com](http://www.colorcon.com)



© BPSI Holdings LLC, 2017. The information contained in this document is proprietary to Colorcon, Inc. and may not be used or disseminated inappropriately.

All trademarks, except where noted, are property of BPSI Holdings LLC.

pi\_nutrafinish\_V7\_03\_2018